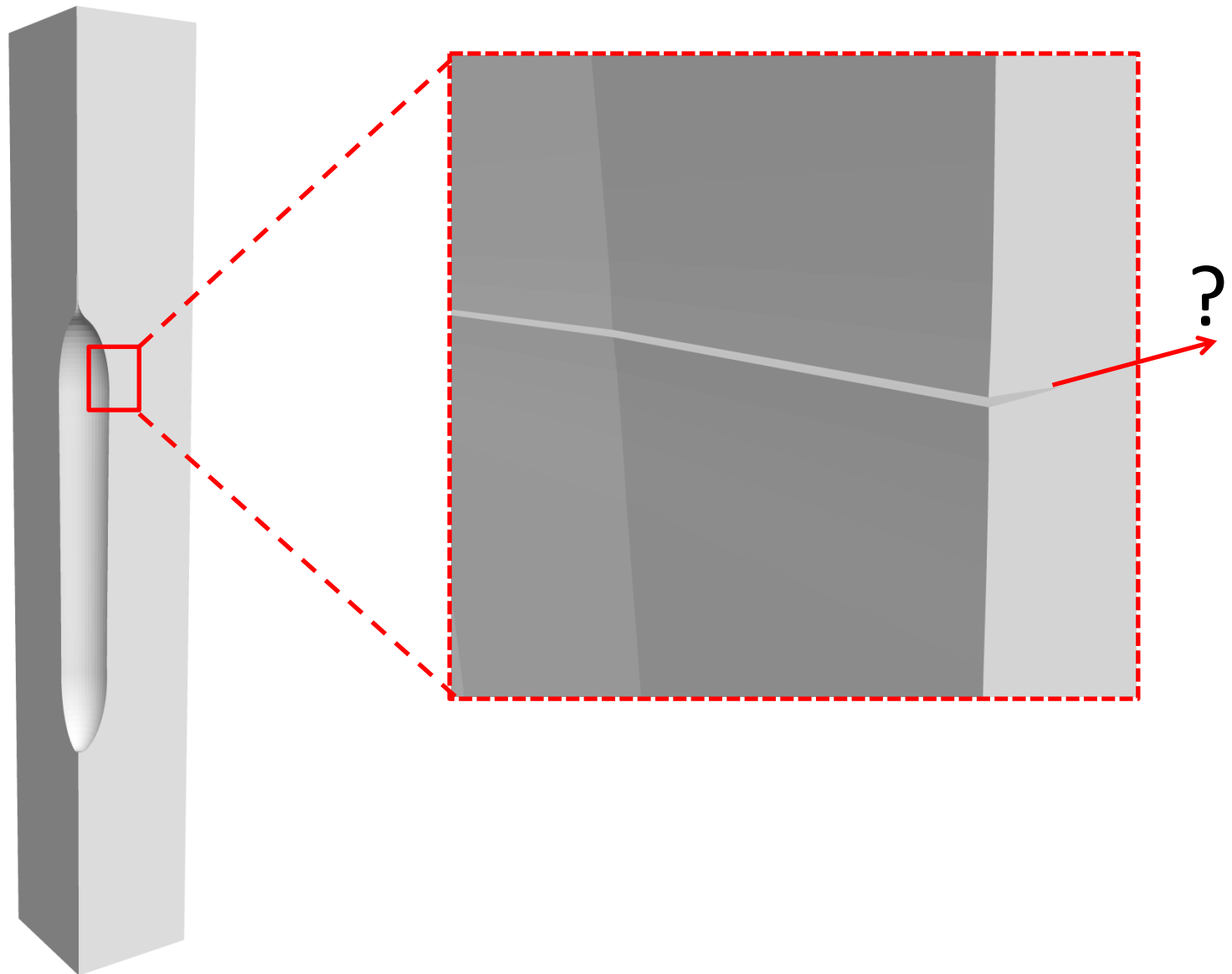


# Thermally induced cracks in gas caverns in rock salt

# Fractures in gas caverns in rock salt



## Example 1: Shaft in a salt mine in Germany

Shaft 1

Shaft 2

Depth: 0.0 m

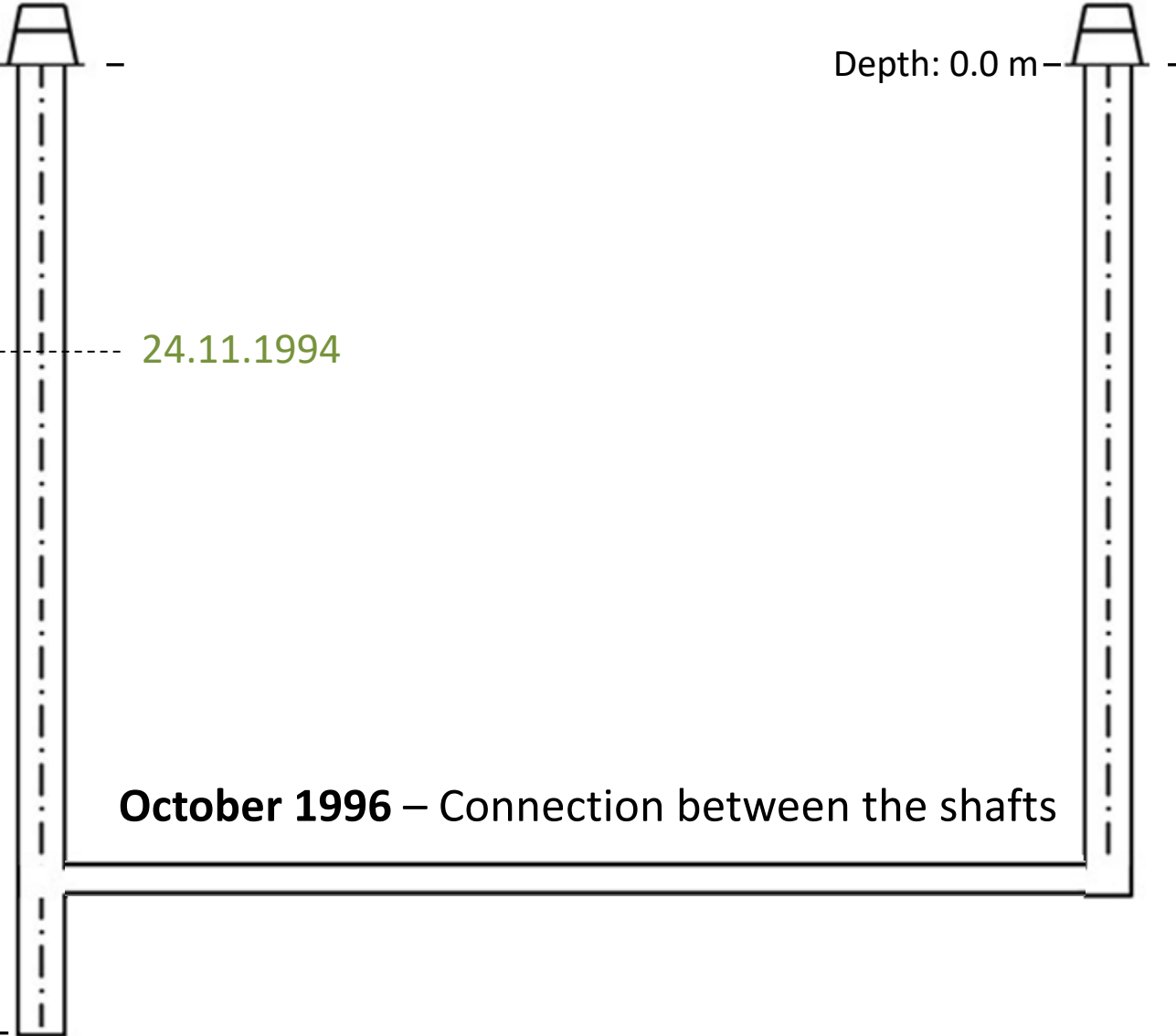
Depth: 0.0 m

EH-450

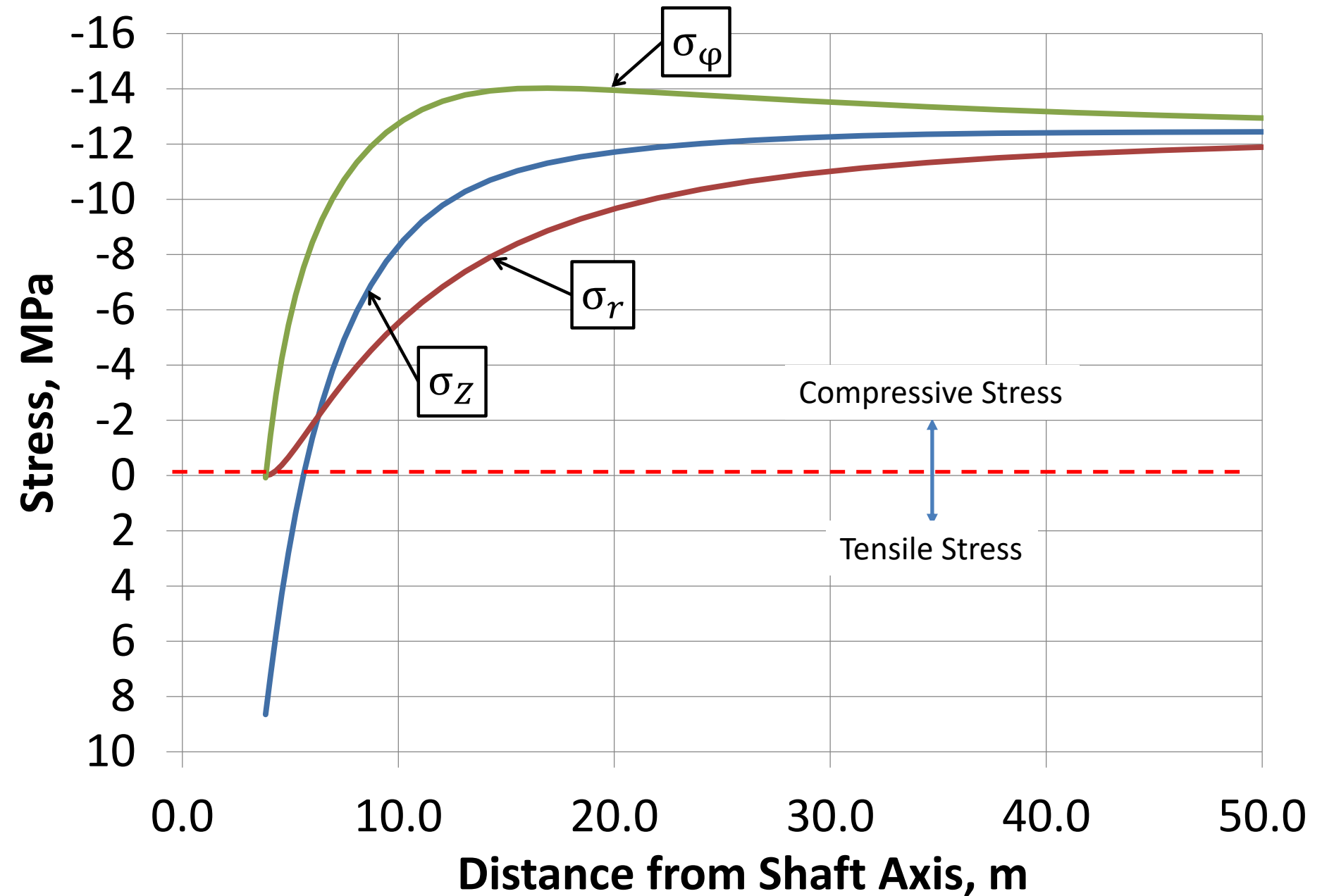
24.11.1994

**October 1996** – Connection between the shafts

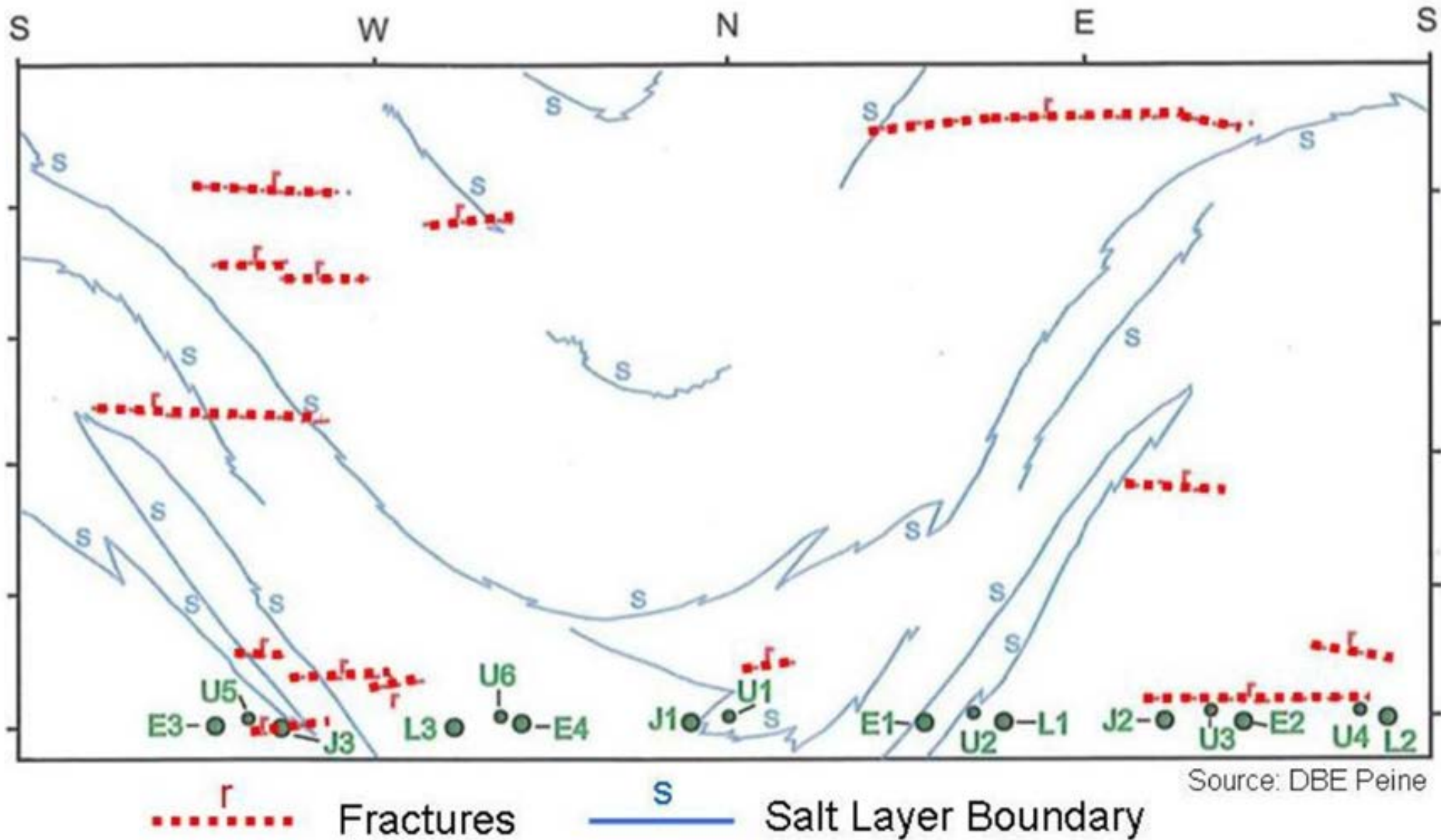
Depth: 907.0 m



# Principal stresses after temperature decrease



## Mapping of fractures at the shaft wall



## Example 2: Test area in a salt mine in France



# Numerical investigations of the temperature distribution

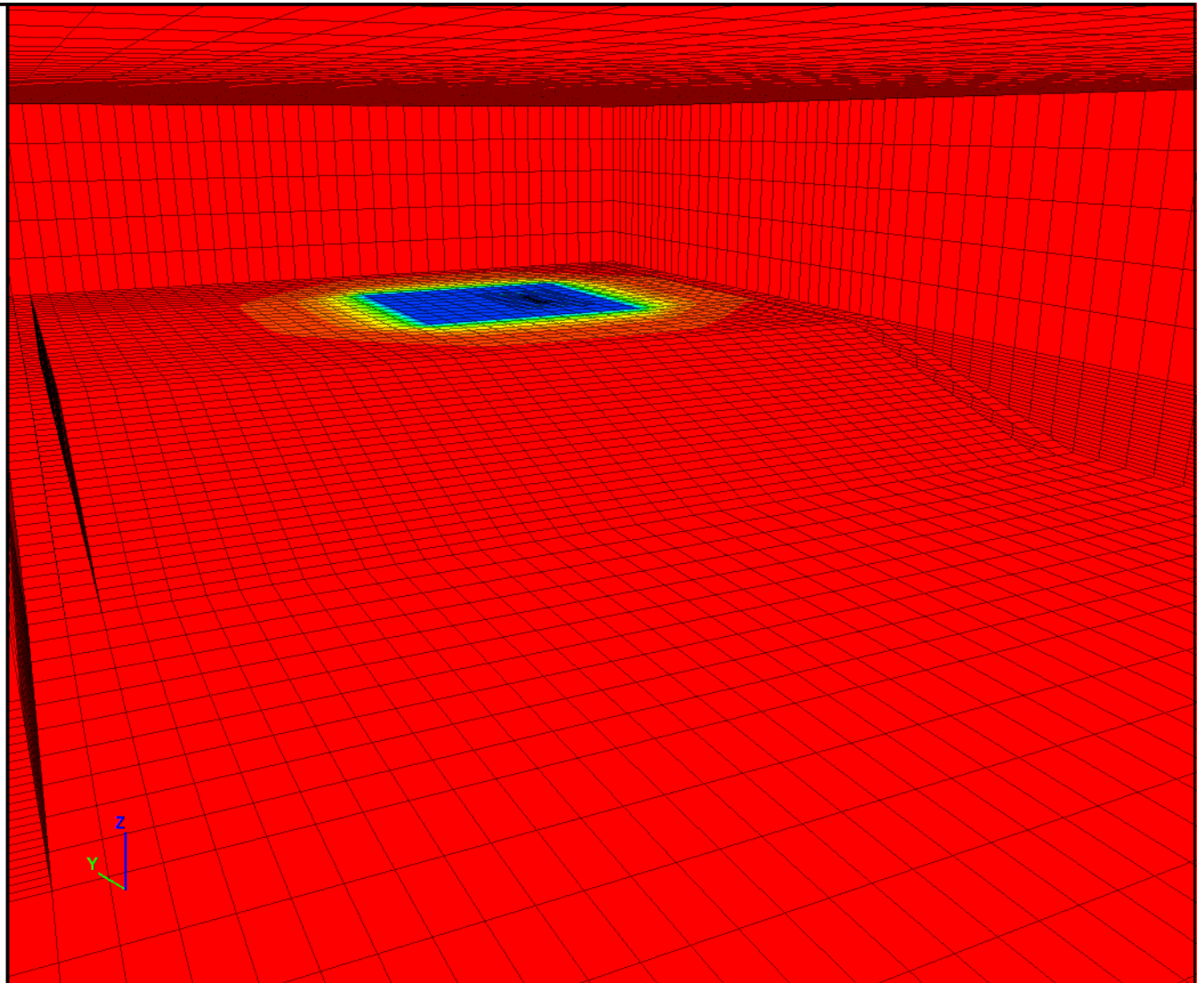
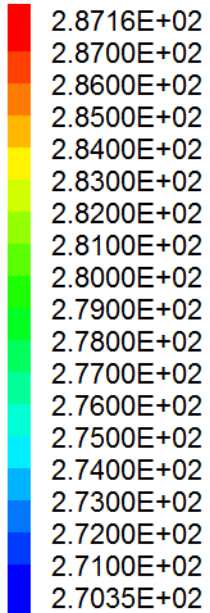
## ***FLAC3D 5.01***

©2016 Itasca Consulting Group, Inc.

Step 3248836

27.07.2017 17:10:21

### **Contour Of Temperature**





Observed macroscopic cracks in the rock salt

